



Concept  Pro

Weatherproof IR Camera Range

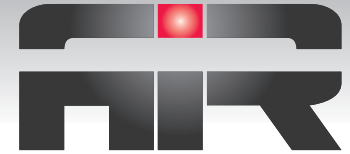
Powered by



Concept Pro

THE AIR RANGE OF INFRA RED CAMERAS FROM CONCEPT PRO COMBINE HIGH PERFORMANCE AND SOLID BUILD QUALITY. THE CAMERAS OFFER RESOLUTIONS OF UP TO 650TVL, IR RANGES OF UP TO 80 METRES, AND AN IMPRESSIVE RANGE OF FEATURES AS STANDARD





TECHNOLOGY
ADVANCED INFRARED

Concept  Pro

CONCEPT PRO IR CAMERAS ARE POWERED BY AIR TECHNOLOGY - AN ADVANCED INFRARED LED SYSTEM.

AIR TECHNOLOGY HAS BEEN DEVELOPED TO DELIVER OPTIMUM CCTV FOOTAGE WITH CLEAR, EVEN ILLUMINATION IN EXTREME LIGHTING CONDITIONS.

THE END RESULT IS A RANGE OF CONCEPT PRO INFRARED CAMERAS, WHICH ARE OF SOLID BUILD QUALITY AND AVAILABLE AT ENTRY LEVEL, MID AND HIGH-PERFORMANCE SPECIFICATIONS.



DAY TIME FOOTAGE



NIGHT TIME FOOTAGE



See the AIR range for
yourself on our
YouTube channel!

To see the footage yourself, go to www.youtube.com/cctvbyvidecon



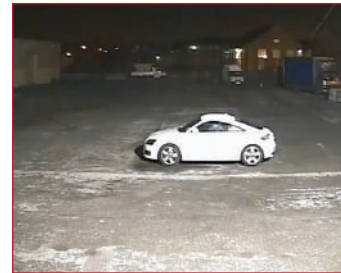
Concept Pro

AIR 15 RANGE

The AIR 15 Range is a simple yet solid camera unit designed for shorter range applications. The cameras come with a fixed lens and are ready to install out of the box. Suitable for retail, small commercial, domestic or lower-cost installations, the AIR 15 Range is for installers requiring an entry-level camera with the performance and reliability of Concept Pro.



DAY TIME FOOTAGE



NIGHT TIME FOOTAGE

Other Features

- 1/3" CCD
- 1.0 LUX Colour
- 0.0 LUX(IR LED ON)
- 18 IR LEDs
- 12V DC
- 230MA(Max)
- 182 X 70 X 80.5mm
- 530G
- 850NM
- Cable Managed Bracket
- Auto White Balance
- Auto Gain Control
- Back Light Compensation
- Internal / External
- IP66 Rated
- Weatherproof
- 5 YEAR WARRANTY



AIR1514/4
420 TVL COLOUR
470 TVL MONO
13M IR RANGE
3.6MM FIXED LENS

AIR1514/6
420 TVL COLOUR
470 TVL MONO
18M IR RANGE
6MM FIXED LENS

AIR1524/4
520 TVL COLOUR
570 TVL MONO
13M IR RANGE
3.6MM FIXED LENS

AIR1524/6
520 TVL COLOUR
570 TVL MONO
18M IR RANGE
6MM FIXED LENS



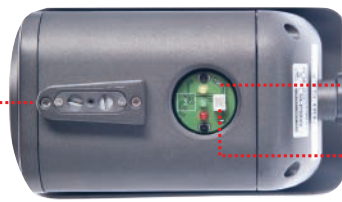
Concept Pro

AIR30 RANGE



The AIR 30 Range offers a high-grade specification with digital picture balance features to deliver a clear and accurate picture in all lighting conditions. In addition to the service video output and external lens adjustment screws, the HG & HGE models feature an On-screen Display menu with a host of picture functions including picture-balancing, D-WDR and 3DNR. All HG & HGE models include a hand-held OSD controller for on-screen operation of the GUI.

EXTERNAL LENS /
ZOOM ADJUSTMENTS



POWER
INDICATOR LED

SERVICE VIDEO OUTPUT
/ OSD

Other Features

- 1/3" CCD
- 1.0 LUX Colour
- 0.0 LUX(IR LED ON)
- 42 IR LEDs
- 12V DC
- 360mA(Max)
- 202 x 85 x 118mm
- 920g
- 850NM
- Cable Managed Bracket
- External Lens/Zoom Adjustments
- Power Indicator LED
- Service Video Output
- Auto White Balance
- Auto Gain Control
- Back Light Compensation
- Internal / External
- IP66 Rated
- Weatherproof
- 5 YEAR WARRANTY

AIR3026HGE Model

- 0.03 Lux Colour
- 0.003 Lux Mono
- 12V DC
- DC 570mA (Max)



Effio

AIR3016

420 TVL COLOUR

470 TVL MONO

20 - 25M IR RANGE

3.5-8MM VARIFOCAL LENS

AIR3026

520 TVL COLOUR

570 TVL MONO

25 - 30M IR RANGE

3.5-8MM VARIFOCAL LENS

AIR3026HG

550 TVL COLOUR

600 TVL MONO

25 - 30M IR RANGE

3.5-8MM VARIFOCAL LENS

ON SCREEN DISPLAY

AIR3026HGE

650 TVL COLOUR

700 TVL MONO

25 - 30M IR RANGE

3.5-8MM VARIFOCAL LENS

ON SCREEN DISPLAY



Concept Pro

AIR45 / 50 RANGE

Other Features

- 1/3" CCD
- 1.0 Lux
- 0.0 Lux (IR LED On)
- 12V DC / 24V AC
- DC 730~750mA, Ac 510~530mA
- 319 X 219 X 100mm
- 2.5kg
- 850nm
- Cable Managed Bracket
- External Lens / Zoom Adjustments
- Power Indicator LED
- On Screen Display (OSD)
- Service Video Output
- Auto White Balance
- Auto Gain Control
- Back Light Compensation
- Internal / External
- IP66 Rated
- Weatherproof
- 5 YEAR WARRANTY

HGE Models

- 0.03 Lux Colour
- 0.003 Lux Mono

60 IR LEDs

IP66 RATED

INTERNAL / EXTERNAL

CABLE MANAGED BRACKET



AIR4526

520 TVL COLOUR

570 TVL MONO

30 - 35M IR RANGE

3.5-8MM VARIFOCAAL LENS

AIR4526HG

550 TVL COLOUR

600 TVL MONO

30 - 35M IR RANGE

3.5-8MM VARIFOCAAL LENS

ON SCREEN DISPLAY

AIR4527HG

550 TVL COLOUR

600 TVL MONO

45 - 50M IR RANGE

9-22MM VARIFOCAAL LENS

ON SCREEN DISPLAY

AIR5026HG

550 TVL COLOUR

600 TVL MONO

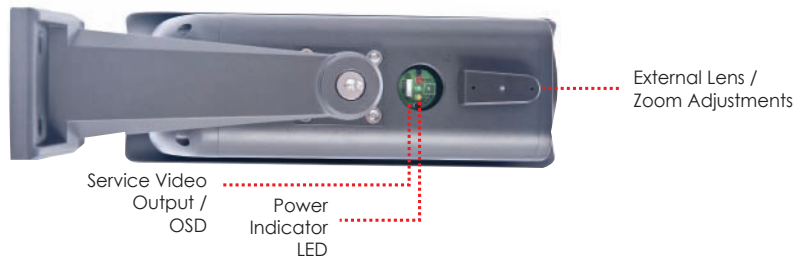
50 - 55M IR RANGE

6-50MM VARIFOCAAL LENS

ON SCREEN DISPLAY



All AIR HG & HGE cameras offer a high-grade specification with digital picture balance features to deliver a clear and accurate picture in all lighting conditions. In addition to the service video output and external lens adjustment screws, the HG & HGE models feature an On-screen Display menu with a host of picture functions including picture-balancing, D-WDR and 3DNR. All HG & HGE models include a hand-held OSD controller for on-screen operation of the GUI.



Effio™

AIR4526HGE

650 TVL COLOUR

700 TVL MONO

30 - 35M IR RANGE

3.5-8MM VARIFOCAL LENS

ON SCREEN DISPLAY

Effio™

AIR4527HGE

650 TVL COLOUR

700 TVL MONO

45 - 50M IR RANGE

9-22MM VARIFOCAL LENS

ON SCREEN DISPLAY

Effio™

AIR5026HGE

650 TVL COLOUR

700 TVL MONO

50 - 55M IR RANGE

6-50MM VARIFOCAL LENS

ON SCREEN DISPLAY



Extend the IR range up to 80m
with AIR-IR.



Concept Pro

AIR-IR



AIR4526 + AIR-IR



Extend the IR range up to 80m with AIR-IR.

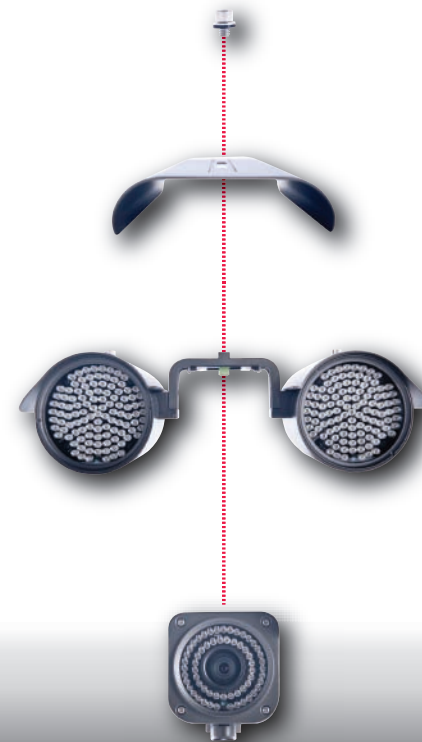
* Lens should be used at 6mm or above to achieve even illumination

The IR range of the AIR 45/50 range can be extended with a bolt-on twin IR lamp. The AIR-IR twin lamp allows the camera unit to view up to 80m.

The bolt-on unit has a slot-in power connection for ease of installation, and fixing screws to ensure the whole unit remains secure.



Easy Assembly



AIR701/IRH

Other Features

- 1/4" SONY Exview CCD
- 0.3 Lux Colour
- 0.0 Lux (IR LED On)
- 220pcs IR LEDs
- 10x Digital Zoom
- 12V DC / 24V AC
- DC: 2000mA AC: 1400mA
- 302.2mm x 219mm x 319mm
- 3.9Kg
- 850nm
- Auto White Balance
- Auto Gain Control
- Back Light Compensation
- Power Indicator LED
- IP65
- Internal / External
- Weatherproof
- Flickerless
- Service Video Output
- 128x DSS
- True Day Night
- 3D-DNR
- Privacy Zones
- RS485 Control

AIR701/IRH

580 TVL

75 - 80M IR RANGE

3.9-97.2MM VARIFOCAL LENS

27X OPTICAL ZOOM



The AIR 701/IRH offers 27x Optical Zoom, 580TVL Resolution, and an IR range of up to 80m, thanks to its twin IR lamps. It's also been designed with ease of installation in mind, with a cable managed bracket, and a service video output allowing you to easily link it to a test monitor during installation.



Videcon PLC Unit 1, Concept Business Park, Smithies Lane,
Heckmondwike, West Yorkshire, WF16 0PN

Tel: +44 (0)1924 528000 Email: sales@videcon.co.uk

www.videcon.co.uk

Disclaimer: Every effort has been made to ensure that the information is accurate.
No liability will be accepted by Videcon PLC for any errors or omissions.